

# 32" CHANNEL DRAIN FLAT GRATE SUCTION OUTLET COVER AND ABS THREE-PORT MANUFACTURED SUMP FOR FIBERGLASS



**VGB CERTIFIED SPECIFICATIONS**

**Floor Flow Rating**  
316 GPM at 3.9 fps

**Wall Flow Rating**  
208 GPM at 2.6 fps

**Sump Depth**  
*Use sump included*

**Open Area**  
25.9 in<sup>2</sup>

## FEATURES

Meets or exceeds ANSI/APSP 16-2011 and NSF/ANSI 50-2009a national standards and ASTM G154 UV testing

Permanently attached gasket reduces gasket alignment problems

Three ports: bottom 2½" OD, 2" ID S/S; inside 2" threaded FPT; two 2" threaded plugs included

Must use transitional glue when attaching to PVC pipe

#316 stainless steel screws

Manufactured from superior UV-resistant engineered polymers

Online product support including downloadable CAD files, General Certificate of Conformity, third-party certificate, installation instructions and more.

Replace drain cover every five years from the date of installation

1 per case

## Unblockable!



Part # 32CDFLFGxxx

## Two drains in one!

### STANDARD COLORS

- 32CDFLFG101 – White
- 32CDFLFG102 – Black
- 32CDFLFG103 – Light Gray
- 32CDFLFG104 – Blue
- 32CDFLFG105 – Dark Gray
- 32CDFLFG108 – Tan

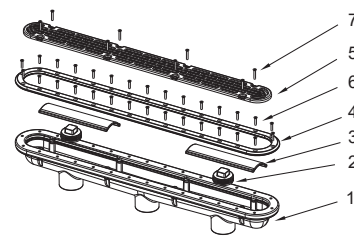
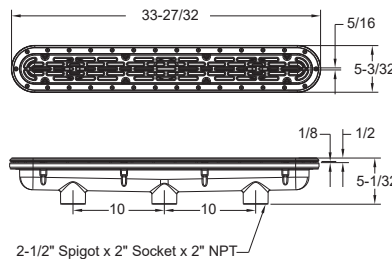
Also available:

Cover only 32CDLNFVxxx  
24 per case

Sump only p/n 32CDSBV101  
4 per case

Clamping Ring for fiberglass  
p/n 32CRTSxxx

**VGB 2008 Compliant**



1. 32" Three-Port Manufactured Fiberglass Sump Bucket With Gasket
2. 2" Tapered Threaded Pipe Plug, Qty 2
3. Port Divider
4. 32" Channel Drain Fiberglass Clamping Ring With Gasket
5. 32" Channel Drain Flush Cover
6. 10 x 1" Flat Head Phillips Screw, 316 SS, Qty 30
7. 10 x 1-1/4" Flat Head Phillips Screw, 316 SS, Qty 8

P 877-768-2717 F 877-276-POOL Outside the US: P +1-949-336-1940 F +1-949-336-1940  
info@aquastarpoolproducts.com www.aquastarpoolproducts.com